

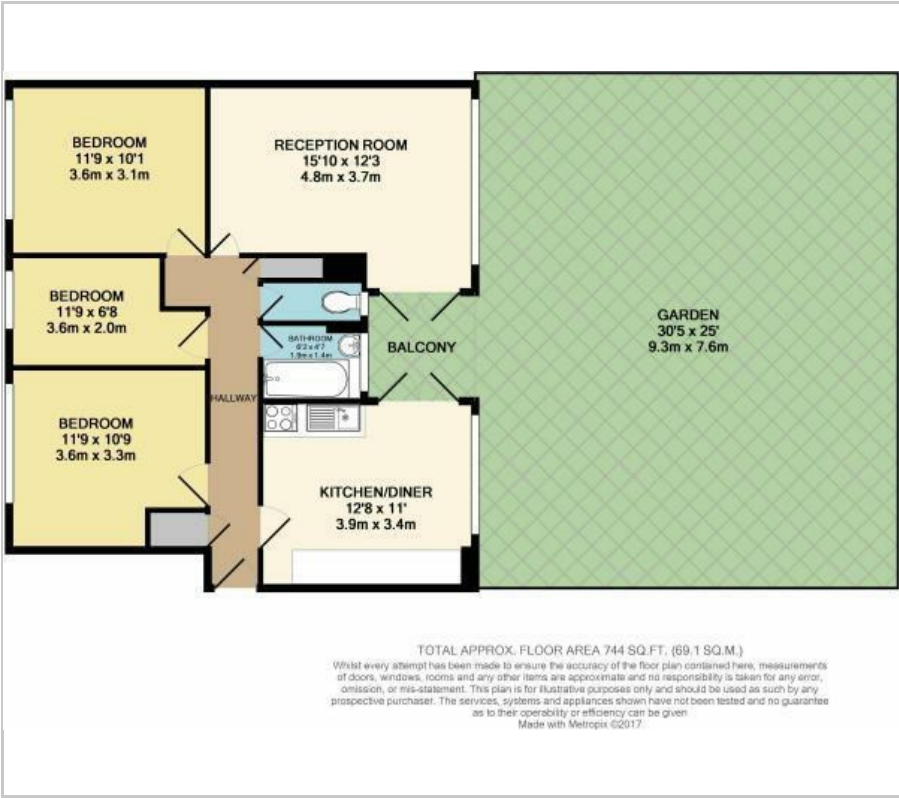


Rowley Gardens, Finsbury Park, N4

£2,650 PCM

3 1 1 D

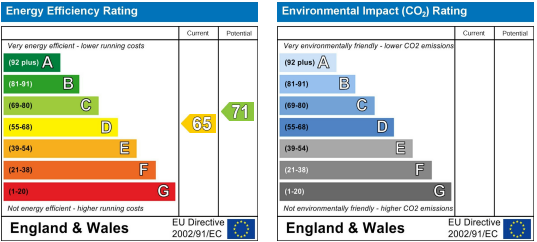
Floor Plan



Area Map



Energy Efficiency Graph



Viewing

Please contact our Homelink Lettings & Estates Office on 0208 882 2112 if you wish to arrange a viewing appointment for this property or require further information.

- Three bedroom property
- Recently refurbished
- Large private rear garden
- Close to Manor House tube
- Council tax band - B - Hackney
- Ground floor flat
- Modern fitted kitchen
- Laminate flooring
- Unfurnished
- Available Beginning of September 2025

Welcome to this splendid three/four-bedroom flat located on the ground floor of Rowley Gardens in the vibrant area of Manor Park, N4. This property has been recently refurbished to a high standard, offering a fresh and modern living space that is sure to impress.

As you enter, you will find a spacious reception room that provides a warm and inviting atmosphere, perfect for both relaxation and entertaining guests. The large, modern fitted kitchen is a standout feature, equipped with contemporary appliances and ample storage, making it a delight for any home cook.

One of the highlights of this flat is the generous private rear garden, which offers a tranquil outdoor space for you to enjoy. Whether you wish to host summer barbecues, cultivate a garden, or simply unwind in the fresh air, this garden is a wonderful addition to your home.

The property comprises three well-proportioned bedrooms, providing plenty of space for family, guests, or a home office. The bathroom is also well-appointed, ensuring comfort and convenience for all residents.

Situated in the sought-after Finsbury Park area, this flat benefits from excellent transport links and a variety of local amenities, including shops, parks, and restaurants. This property will be available from the beginning of August, making it an ideal choice for those looking to move into a stylish and comfortable home.

Council tax band - B - Hackney Council - 1,529.51 -25/26



These particulars, whilst believed to be accurate are set out as a general outline only for guidance and do not constitute any part of an offer or contract. Intending purchasers should not rely on them as statements of representation of fact, but must satisfy themselves by inspection or otherwise as to their accuracy. No person in this firm's employment has the authority to make or give any representation or warranty in respect of the property.

Homelink Lettings and Estates
62 Chase Side, London N14 5PA
0208 882 2112 homelink.co.uk

